

AERO

DISPLAY SOLUTIONS

About Us

AERO display solutions is a pioneer and a digital powerhouse with its revolutionary approach to overcome the ever-changing requirements of consumers in the Display industry.

We are a solution provider assisting **HNI Homes, Enterprises, Retails, Hospitality and Offices** to accomplish their aims and objectives through our innovative solutions available across the globe. With our premium technology and designs, we are able to enrich the display experience of many through our in-house technology development and product manufacturing.

AERO offers some of the most progressive and customizable commercial display solutions available, including **4K and Ultra HD LED Display walls for outdoor/indoor use, LED/LCD panels, Digital Posters and Waterproof Mirror TVs, Interactive Flat Panel Display, LED Cubes, Holograph Display, Square TVs and Touch Base Customized Solutions.**

Product Portfolio



AEROSCAPE: INDOOR

- **Flicker-free and seamless viewing experience**
- **Customized solutions**
- **Longest lifespan of 100K hours**
- **Space saving front maintenance**
- **Supports 24/7 operations**
- **Noiseless and low power consumption**
- **Multi – screen combined with centralized control**
- **Finest pixel pitches P0.7 – P4**
- **Power saving**
- **Industry applications: Retail, Corporate, Government, Hospitality, Museum, Airport & Broadcast**



AEROSCAPE: OUTDOOR

- **Consistent brightness and colour representation**
- **Customized solutions**
- **Applicable for both outdoor and semi-outdoor**
- **Ultrawide viewing angle**
- **Stays strong under extreme weather conditions**
- **IP-65 in front with waterproof feature**
- **Supports 24/7 operations**
- **Lifespan of 1,00,000 hours**
- **Easy maintenance / rear & front maintenance**
- **Finest pixel pitches P2.5 – P10**
- **Industry applications: Retail, Mall, Government, Hospitality, Real Estate, Health & Medical, Banks & Financial Institutions, Smart City & OOH**



3D OUTDOOR ACTIVE LED VIDEO WALL

- Consistent brightness and colour representation
- Customized solutions
- Different options like Flexible/ L- Shaped/ Transparent & 3D Active LED Video Wall
- Applicable for both outdoor and semi-outdoor
- Ultrawide viewing angle
- Stays strong under extreme weather conditions
- IP- 65 in front with waterproof feature for outdoor
- Supports 24/7 operations
- Lifespan of 1,00,000 hours
- Easy maintenance
- Finest pixel pitches P2.5 – P10
- Industry applications: Retail, Mall, Government, Hospitality, Real Estate, Health & Medical, Banks & Financial Institutions, Smart City & OOH

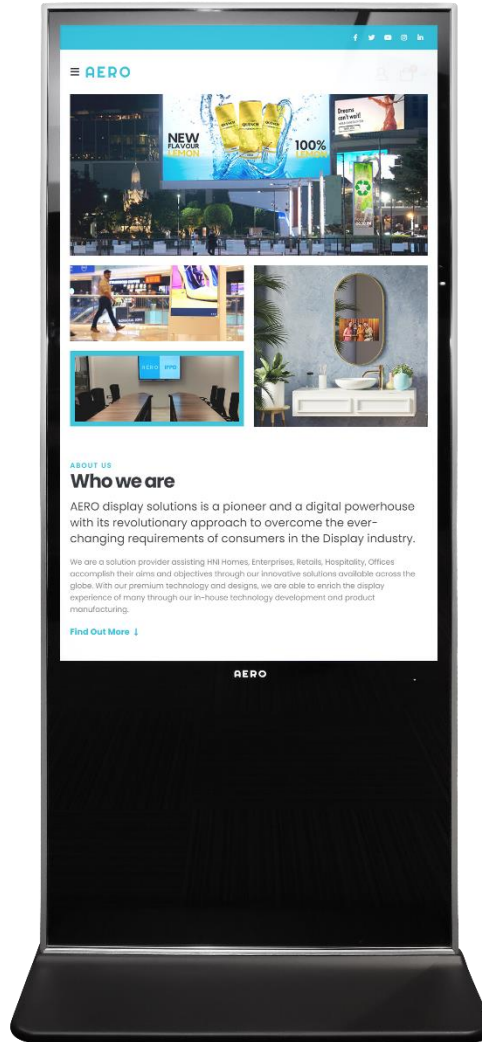
AEROSCAPE: FLEXIBLE / CURVED INDOOR





INTERACTIVE FLAT PANEL DISPLAY

- **Tough and sturdy aluminium alloy panel structure**
- **Ultra narrow frame**
- **Compatible for video conferences**
- **4mm toughened glass with an anti-glare screen**
- **Advanced IR 20 touchscreen**
- **Sizes 55 - 98 inches**
- **Storage Upto 8 GB RAM 128 GB ROM with 13.0 android**
- **Optional windows**
- **IPS panel**
- **Industry applications: Education, Government & Corporate**



ULTRA SLIM KIOSK

- **Digital Interactive Kiosk / Digital Kiosk**
- **Ultra slim 22 mm width**
- **Sizes 32 - 65 inches**
- **Plug and play**
- **Lightweight and portable**
- **Chrome-coated frames**
- **Lifespan up to 30,000 hours**
- **Designed to be controlled centrally**
- **Android OS**
- **IPS panel**
- **Industry applications: Retail, Government, Hospitality, Museum, Airport, Events & Exhibitions**



DUAL SIDE HANGING KIOSK

- **Digital Kiosk**
- **Ultra slim 45 mm width**
- **Sizes 37 & 43 inches**
- **Plug and play**
- **Lightweight and portable**
- **Chrome-coated frames**
- **Lifespan up to 30,000 hours**
- **Designed to be controlled centrally**
- **Android OS**
- **IPS panel**
- **Industry applications: Retail, Government, Hospitality, Event & Exhibition, Airport, Health & Medical, Banks & Financial Institutions**



DUAL SIDE STANDING KIOSK

- **Plug and play**
- **High brightness**
- **Ultra slim built**
- **16/7 operation**
- **Built-in speakers**
- **Lightweight design**
- **Double - sided screens**
- **Designed to be controlled centrally**
- **Android OS**
- **IPS panel**
- **Industry applications: Retail, Government, Hospitality, Event & Exhibition, Airport, Health & Medical, Banks & Financial Institutions**



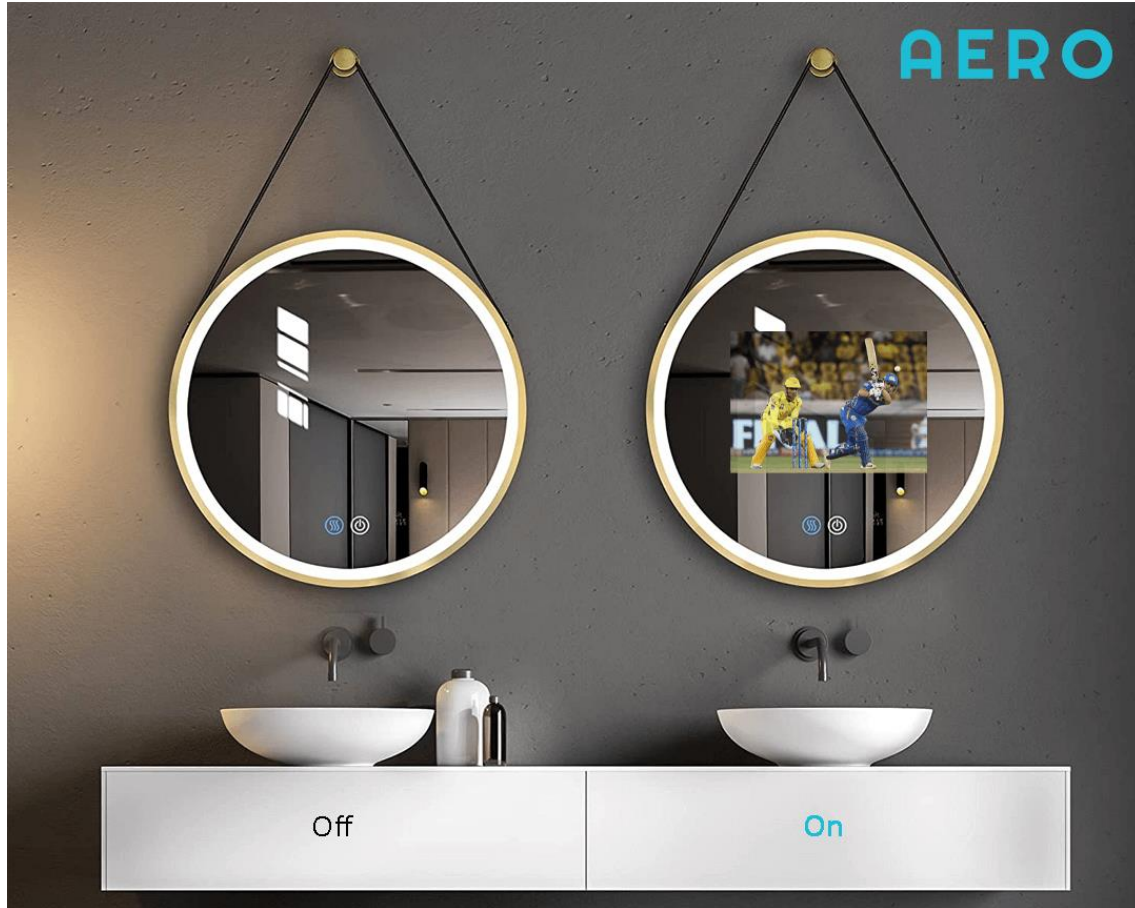
A – FRAME STANDEE

- **Plug and play**
- **High brightness**
- **Ultra slim built**
- **16/7 operation**
- **IPS panel technology**
- **Built-in speakers**
- **Lightweight design**
- **For indoor use**
- **Android OS**
- **Display size - 43 inches**
- **Designed to be controlled centrally**
- **Industry applications: Retail, Real Estate, Government, Hospitality, Event & Exhibition, Airport, Health & Medical, Banks & Financial Institutions**



CUSTOMIZED OUTDOOR HIGH BRIGHTNESS DISPLAY

- **Plug and play**
- **High brightness**
- **Customized shapes / colours**
- **24/7 operation**
- **IPS panel technology**
- **Built-in speakers**
- **Toughened glass protection**
- **Android OS**
- **Inbuilt air cooling system**
- **IP – 65 certified**
- **Industry applications: Smart City, Museum & OOH**



INTERACTIVE SMART MIRROR TV

- **Customized design and technology**
- **Available in sizes 24 - 98 inches**
- **Silver and Black mirror colours**
- **Blend of luxury and technology**
- **Capacitive touch**
- **Android OS**
- **Multiple inputs- HDMI , USB**
- **Industry applications: Retail, Residential (Luxury Villa), Hospitality & Architect**



High Contrast



IP65 Waterproof Cabinet



UHD/4K Resolution



Anti-Fog Screen



Interactive Screen*



MIRROR TV

- **Customized design and technology**
- **Available in sizes 24 - 98 inches**
- **Silver and Black mirror colours**
- **Blend of luxury and technology**
- **Multiple sources**
- **Inbuilt speakers**
- **Smart android panel**
- **Industry applications: Retail, Residential (Luxury Villa), Hospitality & Architect**



High Contrast



IP65 Waterproof Cabinet



UHD/4K Resolution



Anti-Fog Screen



Interactive Screen*

CUSTOMIZED TOUCH TABLE



- **Plug and play**
- **16/7 operation**
- **IPS panel technology**
- **Built-in speakers**
- **Customized sizes / colours / material**
- **Sizes: 32 – 86 inches**
- **PCAP / IR – 10 touch**
- **Android / windows OS**
- **Designed to be controlled centrally**
- **Industry applications: Retail, Mall, Corporate, Education, Museum & Architect**



HOLOGRAPHIC DISPLAY

- **Plug and play**
- **16/7 operation**
- **IPS panel technology**
- **Sizes: 24 – 86 inches**
- **Built-in speakers**
- **Lightweight design**
- **Customized shapes / colours**
- **Designed to be controlled centrally**
- **Industry applications: Retail, Museum & Corporate**



LIFT LOBBY

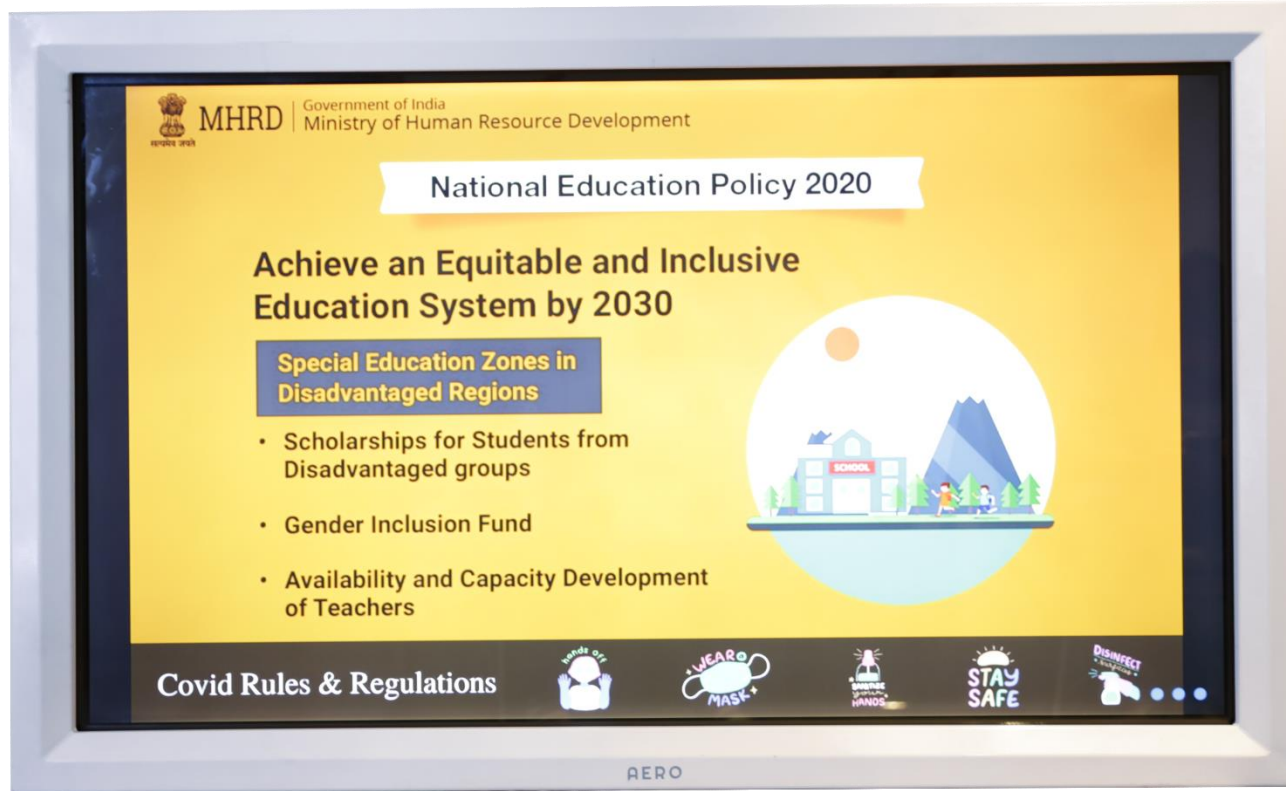
- **Plug and play**
- **16/7 operation**
- **IPS panel technology**
- **Built-in speakers**
- **Customized sizes / colours**
- **Android OS**
- **Designed to be controlled centrally**
- **Industry applications: Retail, Residential & Corporate**



K - TYPE KIOSK

- **Plug and play**
- **16/7 operation**
- **IPS panel technology**
- **Built-in speakers**
- **Customized sizes / colours**
- **Interactive IR / P CAP**
- **Android / windows OS**
- **Designed to be controlled centrally**
- **Industry applications: Mall, Museum & Government**

DIGI BOARD



- **Plug and play**
- **High brightness**
- **Customized shapes / colours**
- **16/7 operation**
- **IPS panel technology**
- **Built-in speakers**
- **Toughened glass protection**
- **Designed to be controlled centrally**
- **Industry applications: Education & Government**



SMART FRAME

- **Plug and play**
- **16/7 operation**
- **IPS panel technology**
- **Compatible with micro USB**
- **Android OS**
- **Designed to be controlled centrally**
- **Industry applications: Retail, Mall, Residential & Corporate**



PROFESSIONAL MONITORS

- **Plug and play**
- **Operates in landscape and portrait mode**
- **High brightness of 400 nits**
- **Lifespan of 30,000 hours**
- **Sizes 24 - 110 inches**
- **IPS panel technology**
- **Android OS**
- **Designed to be controlled centrally**
- **Industry applications: Retail, Government, Hospitality, Airport, Events & Exhibitions**



AERO PANE

- **Plug and play**
- **Cascade connection system / optional**
- **Extended mode**
- **Can be used in portrait & landscape**
- **Ultra slim: Weight less than 35 Kg**
- **Centralized video control and management / optional**
- **Anti-reflective glass-coated screens**
- **Lifespan of 1,00,000 hours**
- **Industry applications: Retail, Real Estate, Events & Exhibitions**



DIGITAL PODIUM / LECTERN

- **Digital controller with amplifier**
- **In-built speaker**
- **IPS panel technology multi - media connectivity**
- **Customized sizes / colours / branding**
- **Built-in audio – out**
- **Interactive PCAP display**
- **Motorized tilt option**
- **Windows OS (best in industry)**
- **Industry applications: Education & Government**

LED CUBES



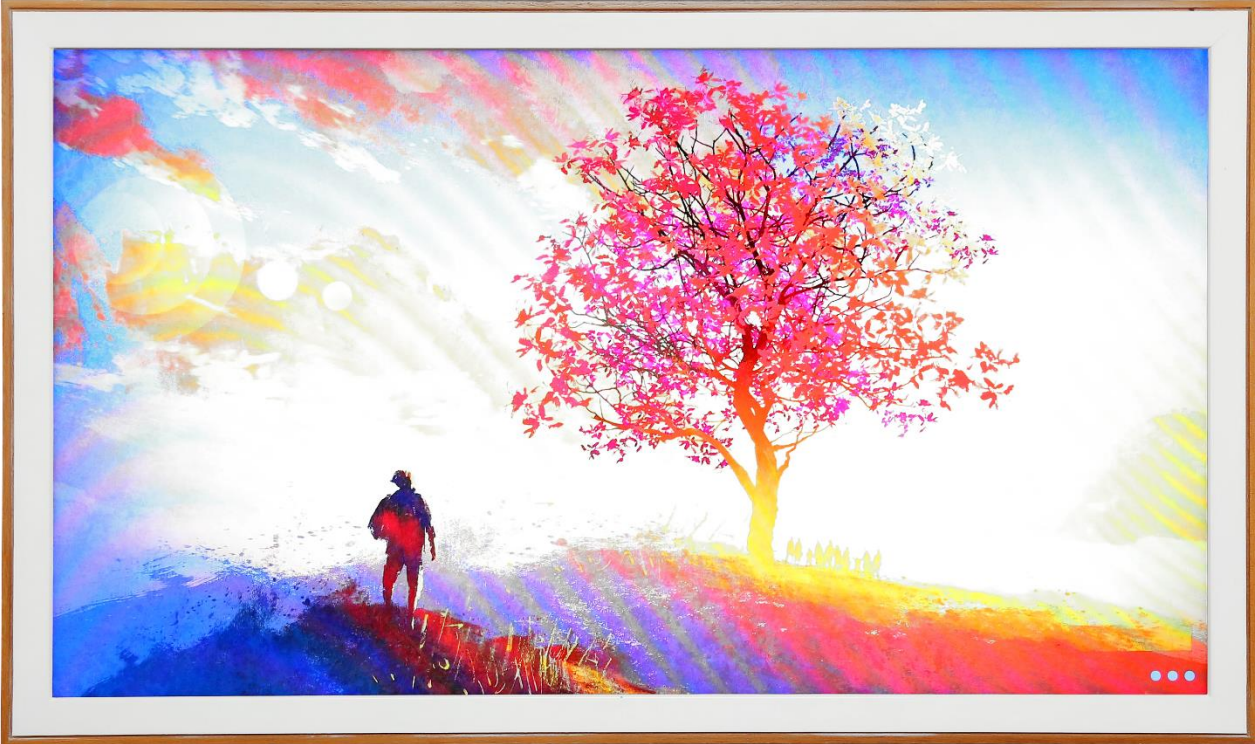
- **Customized solutions**
- **Longest lifespan of 1,00,000 hours**
- **Space saving fully front maintenance**
- **Supports 24/7 operations**
- **Easy maintenance**
- **Low power consumption**
- **Designed to be controlled centrally**
- **Industry applications: Retail, Mall, Hospitality, Museum, Airport, Events & Exhibitions**

SQUARE TV



- Plug and play
- Ultra slim & sleek
- 16/7 operation
- IPS panel technology
- Display size – 24 x 24 inches
- Built-in speakers
- Lightweight design
- Android OS
- Designed to be controlled centrally
- Industry applications: Retail & Corporate

CANVAS TV



- **Plug and play**
- **16/7 operation**
- **IPS panel technology**
- **Can be used as digital painting**
- **Android OS**
- **Industry applications: Museum, Art Gallery, Events & Exhibitions**



AERO LIFT & LEARN SOLUTION

- **Plug and play**
- **16/7 operation**
- **IPS panel technology**
- **Customized solution**
- **Sensor based**
- **100 % accuracy**
- **Android / windows OS**
- **Industry applications: Retail, Mall, Museum, Hospitality & Corporate**



HEALTH KIOSK

- **Plug and play**
- **Customized sizes / colours**
- **Resolution 1080 X 1920**
- **Life Span Up to 30000 hours**
- **Up to 75 health checkups**
- **Android OS**
- **Industry applications: Education, Corporate, Airport, Mall, Gym & Fitness Centers**



SMART TVs

- **Plug and play**
- **10/7 operation**
- **Sizes 24 – 86 inches**
- **Built-in speakers**
- **UHD Resolution 3840 X 2160**
- **Netflix / facebook / youtube**
- **Slim design**
- **Latest android version**
- **Android / web OS**
- **Industry applications: Residential (Luxury Villa)**



STITCH TELEVISION

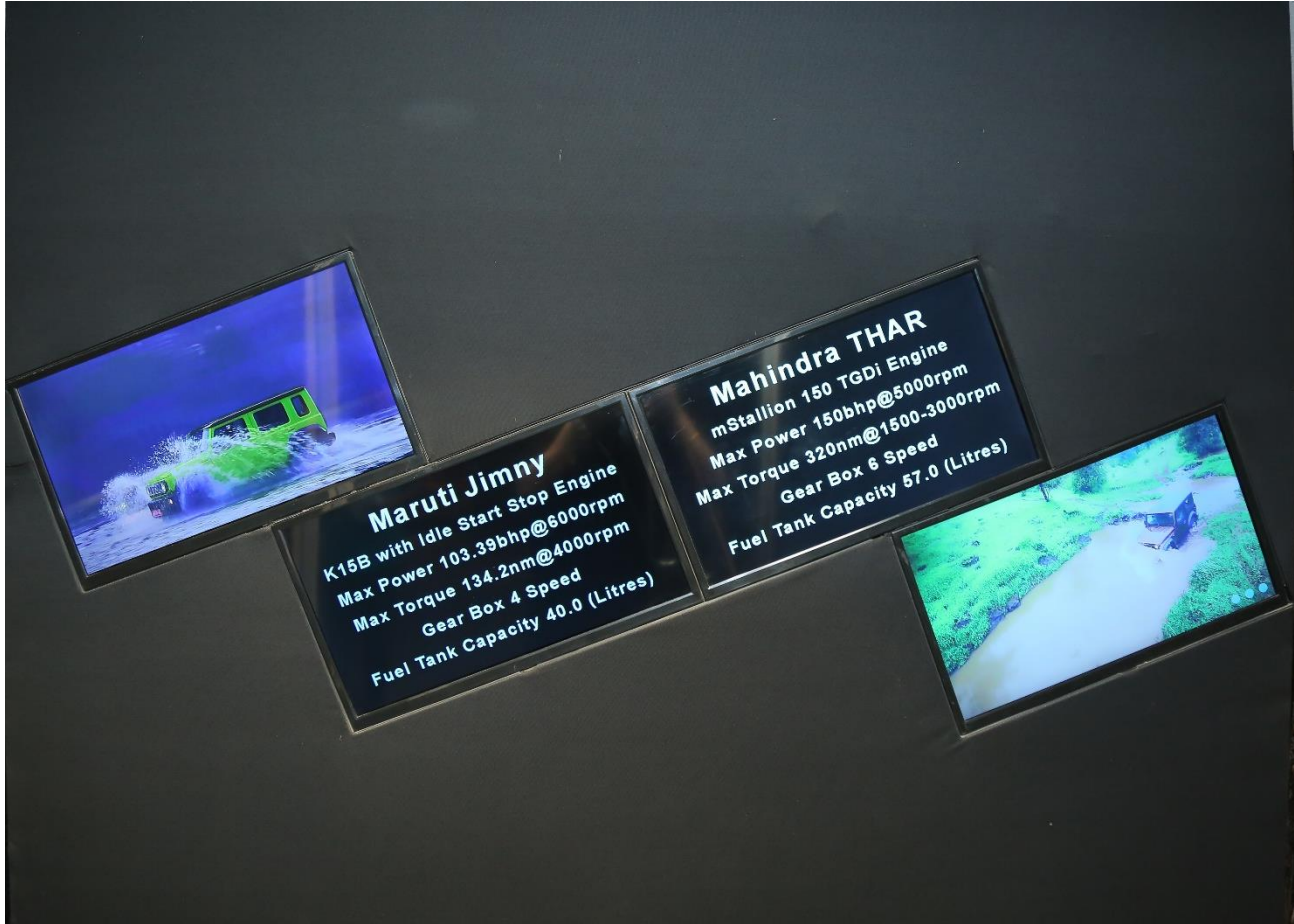
- **Customized design and technology**
- **Available in size 24 & 32 inches**
- **Blend of luxury and technology**
- **With customized leather framing / colours**
- **With built - in speakers**
- **Android OS**
- **Design to be controlled centrally**
- **Industry applications: Residential (Luxury Villa) & Corporate**

CAST TELEVISION



- **Customized design and technology**
- **Available in size 24 & 32 inches**
- **Silver and Black mirror colours**
- **Blend of luxury and technology**
- **With customized outer metal framing / colours**
- **With built - in speakers**
- **Android OS**
- **Multi source input**
- **Industry applications: Residential (Luxury Villa)**

CASCADE DISPLAY



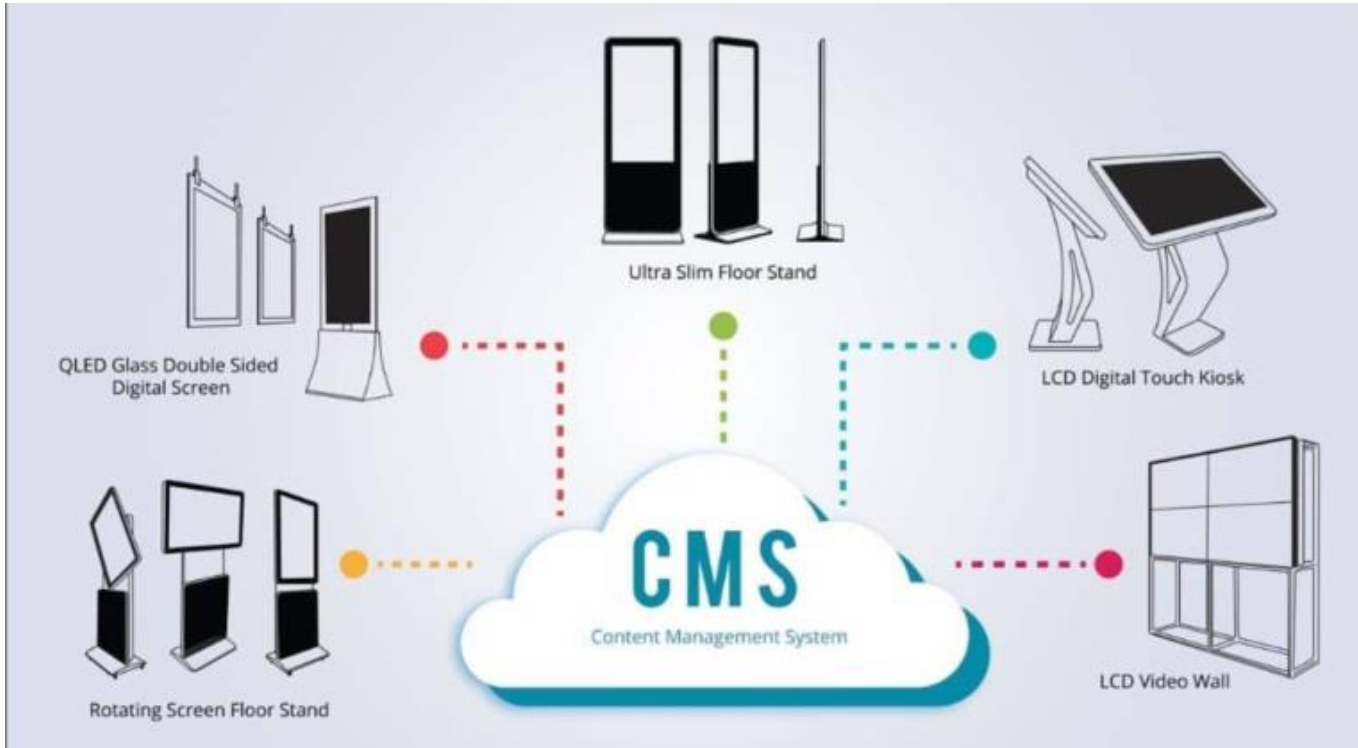
- **Plug and play**
- **16/7 operation**
- **IPS panel technology**
- **Built - in speakers**
- **Designed to be controlled centrally**
- **Industry applications: Retail & Corporate**

SMART TOUCH



- **Plug and play**
- **Compatible with android**
- **Customizable layouts**
- **Easy to change content**
- **Industry applications: Retail, Real Estate, Architect, Museum & Corporate**

AERO CAST CMS (CONTENT MANAGEMENT SYSTEM)



- Web based
- User - friendly UI
- 24 X 7 X 365 days monitoring
- Multi - zone templates
- Real-time, relevant, informative and beautiful content with apps

CMS provides comprehensive features to manage your signage network. Key modules of CMS :

- Display management
- Asset management
- Compositions management
- Schedule management
- Multiple splitting



GUESS



OBEETEE
CARPETS

DECOHOME



KAPURTHALA
JEWELLERS

Narang jewellers™



TIMDAA





Thank you

Website: www.aerodigitalworld.com

Follow us on:     